



KEVIGS SIXTH FORM

# **King Edward VI Grammar School**

## **Sixth Form Course Guide 2022**

## Welcome

We very much hope that you will choose to join the Sixth Form at King Edward's, and the information contained within this booklet is intended to help your decision-making process. During Year 11 we will provide you with information and guidance to help you make informed and appropriate decisions about the courses that you will study once you have completed your GCSEs.

All students at King Edward's study four courses for two years. As one of these four courses, you will undertake the two-year International AS & A-Level Global Perspectives & Research (GPR), which will prepare you for life beyond school. In addition to this, you will choose three A-level subjects in Year 12, and continue with these subjects through to the end of Year 13. You will then leave King Edward's with the equivalent of four A-levels.

## Entry criteria

To gain a place in the Sixth Form, you must meet all our academic entry requirements. These are:

- **A minimum of four grades at 6 or above at GCSE**
- **A grade 5 or higher in GCSE English**
- **A grade 5 or higher in GCSE Mathematics**
- **A minimum of a grade 6 at GCSE in the subject you wish to study (if the subject is offered at GCSE)**
- **A grade 7 or higher in GCSE Mathematics if you wish to study A-level Further Mathematics**

For subjects that are new at A-level (for example, Psychology), please see the individual subject pages for some subject-specific entry criteria.

For science subjects at A-level, it is also highly recommended that you have a minimum of grade 6 in GCSE Mathematics. If you studied GCSE Combined Science, you should achieve at least grade 6-6 to continue studying sciences at A-level.

Help with all aspects of sixth-form life is available from a well-qualified and experienced Sixth-Form Team. The team is situated within Norton Lodge, which has a Sixth-Form Café and Study Centre. We have a dedicated Careers Coordinator and part of her role is to network with universities and admissions tutors, and provide a greater insight into the most appropriate course for you.

You will be assigned a personal Academic Tutor during your time in the Sixth Form. The tutor will be a member of the academic staff and may teach one of the subjects that you are studying. You will have a meeting with your tutor every two weeks. This individualised approach will assist you in making their sixth-form experience a real success.

It is our belief that alongside your academic subjects, you should take an active role in extra-curricular activities, and should therefore have the time to do so. During the working week we provide you the opportunity to express yourself on the sports field, start up a new club or society, or attend a range of enrichment activities. We also encourage you to develop your leadership potential and we provide many leadership opportunities, from academic and pastoral mentoring of younger students, to taking responsibility for one of our houses, to getting involved with the Combined Cadet Force, to playing in a variety of musical ensembles. In Year 13, there is an opportunity for you to become a senior prefect and take an important role in the overall leadership of the school.

To help you make the right choice of post-16 education, there are many people who can give you the advice that you need. Subject teachers are a good place to start, but more specific help can be found through individual research. Help and guidance with this can be given by your tutors, your Head of Year or the Sixth Form Team. The decision to join our Sixth Form should be a positive one, based on the attractiveness of the courses we offer, the school environment, and the extra-curricular opportunities that we provide. We are justly proud of our Sixth Form, our A-level results and the destinations of our students.

Please do not hesitate to contact the Sixth-Form Team ([sixthformadmin@kevigs.lincs.sch.uk](mailto:sixthformadmin@kevigs.lincs.sch.uk)) if you have any questions.

Yours faithfully,

Mr M Aicken & Miss Maidment

Director & Assistant Director of Sixth Form



## Additional Information

### Timeline

The following gives a timeline for applications this year.

- **Thursday 18<sup>th</sup> November 2021 – Sixth Form Launch**
- **Thursday 18<sup>th</sup> November 2021 – Application Form & Subject videos available online to view**
- **Monday 31<sup>st</sup> January 2022 – deadline of online applications**
- **March-April 2022 – meetings and discussions with Year 11 students around option choices**
- **Monday 4 July 2022– sixth-form induction day (date to be confirmed)**
- **August – GCSE results day and confirmation of sixth-form places**
- **September 2022 – start of Year 12**

### Sixth Form Dress Code

A detailed Dress Code policy can be found on the school website ([www.kevigs.org](http://www.kevigs.org)), but a simplified summary would be to follow one of two options:

- A suit, a formal shirt (plain or patterned), a plain well-fitting turtleneck, a plain V-neck sweater, waistcoat or cardigan, formal shoes and a tie (optional). Winter coats can be of a personal choice and should be worn over the suit jacket.
- A matching skirt or trouser suit, a formal shirt/blouse (plain or patterned), a plain well-fitting turtleneck, a plain V-neck sweater, tank top, waistcoat or cardigan and low (2.5-inch maximum) flat-heeled shoes or ankle boots (plain). Winter coats can be of a personal choice and should be worn over the suit jacket.

Please note that on St James' Assembly days with the whole school, sixth-formers are required to wear a white shirt/blouse and a dark jacket. These days include the first full day of school, Charter Day, Remembrance Day and the last day of each full term.

Please take the dress code into careful consideration before purchasing any items for September. Please also note that extreme fashions are not acceptable.

## WisePay

KEVIGS is now a cashless school. Students make payments and credits (for food and drinks, educational visits, school materials, etc.) via WisePay. Students will be asked to give permission to set up a biometric recognition system, where a fingerprint will be taken to allow food and drinks to be purchased in the school canteen and in Hubbard's café. Details for WisePay account activation will then be sent to the priority contact email address on the school admissions form.

## Hubbard's Café

Sixth Form students can purchase food and drink from either the school canteen, or from Hubbard's Café. Hubbard's Café is situated within Norton Lodge Sixth Form Centre, and is for Sixth Form use only. Hubbard's area is also used by Sixth Form students during free periods, or as an informal area to read or study.

## Directed Study Periods

All Sixth Form students have some Directed Study periods per fortnight. Directed Study Periods must be spent in Norton Lodge Study Room (unless agreed otherwise with the Sixth Form Team). Directed Study periods are registered sessions, and therefore are accounted for in your percentage attendance.

## Free Periods

Free periods are, simply put, 'free' time. You can spend them as you choose; depending on where your free periods are timetabled, you might choose to walk into town, arrange a support session in school, make time to have something to eat, or go home. Please note that students are expected to sign out and sign in again at Norton Lodge, to ensure the Sixth Form Team know your location during school hours.

## 16-19 Bursary

King Edward VI Grammar School is in receipt of government funding from the 16-19 Bursary Fund. The purpose of this funding is to widen participation in Post-16 Education, by helping students to overcome any financial barriers that they may face, such as transport, meals, books and equipment. Applications open in September each year, and eligible students can expect to receive a bursary award in the first week after half term. Students can check their eligibility via the school website, under the 'KEVIGS 16-19 Bursary Policy'. Please note that the policy and application form are updated each year to reflect any changes to government guidance.

## Traveling by Bus

An application can be made to [Lincolnshire County Council for post-16 transport](#). Please note that all post-16 students must pay towards the cost of transport to school.

In addition, private services to the school operate from Grimsby, Cleethorpes, and Market Rasen. These are run by Grayson's School Buses, and can be contacted directly on 01472 812543.

## Combined Cadet Force (CCF)

King Edward VI Grammar School is in the enviable position of having its own (CCF), with both Army and Royal Air Force Sections and is part of the largest voluntary youth organisation in the area. The activities on offer include: shooting, drill, field craft, rock climbing, mountaineering, abseiling, canoeing, skiing, gliding, flying, sailing, orienteering, first aid, and self-survival. Cadets can participate in these activities on CCF evenings, at weekends, or during the adventure week at the end of the summer term.

Cadets can get money-can't-buy, once-in-a-lifetime experiences. KEVIGS cadets have become Lord Lieutenant's Cadets, and met royalty and prime ministers. They have flown solo and have become gliding, signals and aerospace instructors. They have been to Buckingham Palace, and they have sleighed with huskies, and skied in Norway. They have qualified as national level musicians, and much more. Most importantly, we develop emotionally intelligent, confident, young leaders. Employers and universities understand and want the skills our cadets develop. The CCF meets on Tuesdays after school from 4.00 to 6.00pm. If you have not already joined and wish to do so, then please feel free to come on the meeting night, or speak to one of the leaders for a personal introduction and welcome.

## Dedicated Sixth Form Student Support

KEVIGS Sixth Form Team includes two dedicated Pastoral and Wellbeing Support Mentors:



Miss Wallis

(Monday-Friday)



Mrs Mackin

(Monday-Wednesday)

Miss Wallis and Mrs Mackin are both experienced in supporting students and children of all ages, with backgrounds in SEND, Education and Childcare. Our Sixth Form Pastoral and Wellbeing Support Mentors are based in Norton Lodge Sixth Form Centre, where they supervise registered Directed Study sessions, check in with students, and offer 1:1 mentoring support and intervention. 1:1 mentoring can take place as regular, pre-booked sessions, or can be informal drop-ins, as and when support is needed. We appreciate that Sixth Form can be a challenging time, and so Miss Wallis and Mrs Mackin are experienced in supporting students with a wide range of issues and needs.

Miss Wallis also monitors Sixth Form attendance, and is able to provide support as necessary to any students with attendance matters. Mrs Mackin also oversees Sixth Form admin, including Sixth Form applications, 16-19 Bursary applications, and timetable changes.

## Careers & Future U

Mrs Healey our Careers & Future U Coordinator is based in the Sixth Form and can help our students with their decisions around their post 18 options such as:

- Higher Education/University
- UCAS Process
- Apprenticeships
- Employability skills

Students wanting to speak to Mrs Healey or our external careers adviser, can do so by emailing her or popping into the office, which is located downstairs in the Sixth Form block.



Mrs Healey

(Wednesday – Friday)

## Destinations of our students

Last year, 81% of our students went into Higher Education at some of the top universities including Oxford and Cambridge, Newcastle, University of Sheffield, who are all part of the Russell Group. The most popular courses last year included: Biosciences, Law, Medicine, History, Engineering, Nursing and Media/Photography/ Journalism. We also had a number of students get an apprenticeship, go into self-employment or employment or decided to have a gap year before going onto Higher Education this year.



## Art & Design (AQA)

The A-level course is essentially a foundation course, giving students the opportunity to explore a range of themes in a wide variety of media and materials. Students will produce practical and critical/contextual work in one or more areas of study, for example, drawing, painting, mixed media, sculpture, ceramics, instillation, printmaking, moving image (video, film, animation) and photography, so that a strong portfolio is created.

At A-level, students can continue to study a range of media or explore a preferred medium or material.

### Entry criteria

- Art & Design GCSE Grade 6 and above

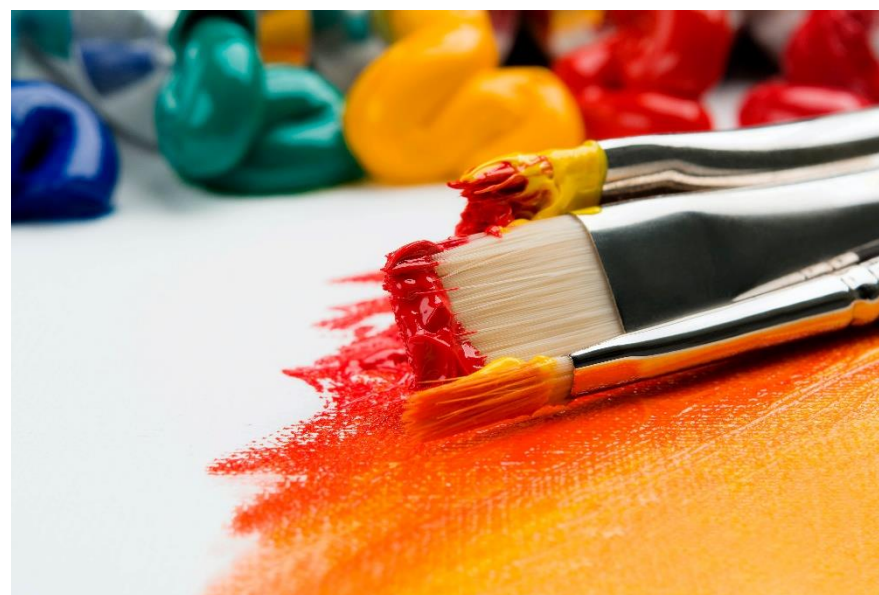
Unit & title of module	Assessment	Percentage of mark
Unit Art 7202/c- Personal Investigation	Coursework portfolio	60%
Unit Art 7202/x- Externally set assignment	Preparatory period +15hrs supervised time	40%

### Progression

Many students will opt for Art & Design because they wish to investigate the subject. Others may wish to study a creative subject to give them a greater range of choices in light of future prospects.

Britain is renowned for its creative individuals and industries; careers, although difficult to access, can command high salaries. Any student taking the course will develop critical awareness, be self-motivated, independent, flexible and a creative thinker. This course also provides the foundation for further study of Art & Design or related subjects in Higher Education.

**Examples of related careers:** Fine Arts and Illustration, Advertising and Media, Publishing, Graphic Design (including CGI design and illustration), Fashion, Applied Arts and Crafts.



## Biology (OCR)

This course has been designed for those students who wish to develop their interest in and enthusiasm for Biology, including a progression towards further study and careers in Biology. The specification has been divided into biological topics, each containing different key concepts of Biology. Once the key features of a biological topic have been developed, applications are considered.

### Entry criteria

- GCSE Grade 6 or above in Biology is required to study this subject at A-level. For those studying Combined Science at GCSE, a Grade 6 and above in the Biology component is required.
- A Grade 6 or above in Mathematics is also required to cope with the mathematical content of the course.

Unit & title of module	Assessment	Percentage of mark
Development of practical skills in Biology (Module 1)	Biological processes (01) 2hrs 15min exam (assess content from 1, 2,3 & 5)	37% of final mark
Foundations in Biology (Module 2)		
Exchange & transport (Module 3)	Biological diversity (02) 2 hrs 15min exam (assess content from 1,2,4 & 6)	37% of final mark

Biodiversity, evolution & disease (Module 4)	Unified biology (03) 1hr 30min exam (assess covers 1 to 6)	26% of final mark
Communications, homeostasis & energy (Module 5)		
Genetics, evolution & ecosystems (Module 6)	Practical endorsement in biology (04) non exam assessment	

## Progression

This course provides an excellent foundation for a career in a wide range of Biological Sciences, including Medicine, Veterinary Science, Physiotherapy, Biotechnology, Sport and Exercise Science and Environmental Biology.

**Examples of related careers:** Microbiologist, Marine Biologist, Pharmacologist, Research scientist (life sciences), Higher education lecturer, Zoologist.



## Business Studies (OCR)

Business Studies A-level gives students an insight into the core functions of business planning; strategies for success; the environment that businesses work in and the way in which that environment changes.

Students will learn about all aspects of the change management process, the ways to adapt businesses to challenging situations and, through the use of various case studies, will illustrate those different techniques.

There are seven key areas of study:

- Business objectives & strategic decisions
- External influences facing business
- Marketing & marketing strategy
- Operational strategy
- Human resource
- Accounting & financial considerations

### Entry criteria

- A minimum of a Grade 6 in either GCSE English or a Humanities subject
- It is desirable that students should have achieved a Grade 6 in Business Studies, where taken

Unit & title of module	Assessment	Percentage of mark
Operating in a local business environment	Exam (2hrs)	Total of 80 marks

The UK business environment	Exam (2hrs)	Total of 80 marks
The global business environment	Exam (2hrs)	Total of 80 marks

## Progression

This is an acceptable qualification for a wide range of courses at university. With further study at postgraduate level, it can lead to careers in the business and marketing sectors.

**Examples of related careers:** Business Analyst, Business development manager, Financial adviser, Human resource officer/manager, Public relations officer/manager, Social media officer/manager



## Chemistry (OCR- B Salters)

Students acquire a systematic and comprehensive knowledge of Chemistry, in addition to meeting cutting edge applications in the chemical industry and in modern life. The A-level is taught in context via a series of Storylines over the two years. Starting with Elements for Life, the Storylines cover a diverse range of chemical ideas, from Developing Fuels through the Ozone Story, to the biochemistry of Polymers, and the chemistry of the Oceans.

You will develop your experimental, analytical and research skills through a variety of practical activities, and these skills will contribute to the Practical Endorsement, which is awarded at the end of the course.

### Entry criteria

- GCSE Grade 6 or above in Chemistry is required to study this subject at A-level & those candidates studying Combined Science at GCSE, a Grade 6 and above in the Chemistry component is required.
- A Grade 6 or above in Mathematics is also required to cope with the mathematical content of the course

Unit & title of module	Assessment	Percentage of mark
Fundamental of Chemistry	Exam	41% of final mark
Scientific Literacy in Chemistry	Exam	37% of final mark
Practical skills in Chemistry	Exam	22% of final mark

Practical  
Endorsement

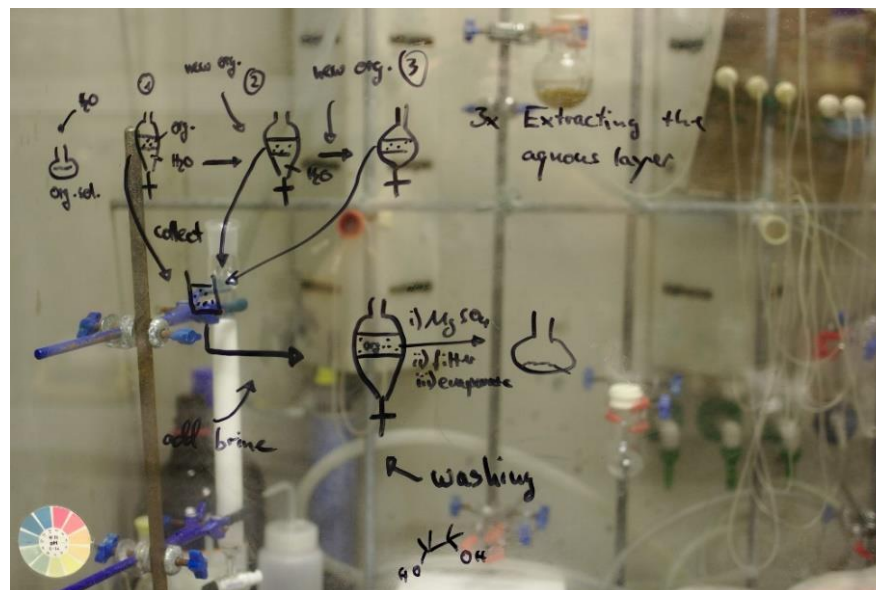
Non-exam  
assessment

Reported  
separately

## Progression

Chemistry provides an excellent foundation for a career in a wide range of disciplines including Medicine, Veterinary Science, Biochemistry, Biomedical Sciences, Chemical Engineering and Geology, and is a well-respected facilitating academic and flexible A-level.

**Example of related careers:** Chemical engineer, Forensic Scientist, Toxicologist, Nuclear engineer, Academic researcher, Food scientist, Engineering



## Drama & Theatre Studies (Edexcel)

This course combines practical creativity and theoretical understanding. For example, students will study the theories of a theatre practitioner then present a performance in the style of the practitioner. Students will be introduced to a wide range of theatrical styles; exploring plays practically, devising and performing published scripts and developing their skills as a performer. It will also help to develop an appreciation of the cultural and social influences on theatrical works.

### Entry criteria

- A minimum of a Grade 6 in English Literature and English Language is required. GCSE Drama is desirable, but not compulsory and an interest in theatre is essential

Unit & title of module	Assessment	Percentage of mark
Devising	Creating a devised performance & portfolio	40% of the qualification
Text in performance	Create a group performance & a monologue or duologue from another text	20% of the qualification
Theatre makers in practice	<i>Live performance</i> which they make & refine notes on the performance.	40% of the qualification

Students create a director's concept for a re-imagined production of the play.

### Progression

Some will wish to improve their confidence and interpersonal skills. Others may be interested in a career in the Theatre, either on the stage or backstage, in front of a camera or behind one – directing or writing film scripts. The course will also encourage independent thinking and develop skills which will be helpful in studying at university level; skills applicable to drama and other subjects.

**Examples of related careers:** Actor, Broadcast presenter, Dramatherapist, Stage Manager, Theatre director, Media researcher, Choreographer, Secondary school teacher, Runner in broadcasting, film and/or video)



## Economics (Edexcel)

Studying Economics will enable you to:

- Understand current economic issues, problems and institutions
- Apply economic concepts and theories to explain real world situations
- Analyse, explain and evaluate the market economy and the role of the government.

There are four themes you will study over the two years:  
Introduction to markets & market failure; The UK economy-  
performance & policies; Business behavior & the Labour market  
and A global perspective

### Entry criteria

- No prior knowledge of Economics is required but students are expected to take a lively interest in current affairs.
- Students should have at a Grade 6 in either English or a Humanities subject, and it is desirable that students should have achieved a Grade 6 in Mathematics and Business Studies, where taken.

Unit & title of module	Assessment	Percentage of mark
Markets & business behavior	Written exam 2hrs	35% of final mark
The national & global economy	Written exam 2hrs	35% of final mark
Micro & macroeconomics	Written exam 2hrs	30% of final mark

## Progression

Economics can be combined with any other subject and can lead to a wide range of careers – in industry, commerce and the public sector. It also enables students to develop important skills. In particular, you will learn valuable problem-solving skills - to think logically, to reason your way to the best solution, and to deal with issues in a wide context.

**Example of related careers:** Chartered accountant, Economist, Financial risk analyst, External auditor, Statistician, Stockbroker, Compliance officer, Local government officer, Investment analyst



## English Literature (AQA)

A-level English Literature enables you to read widely in texts from different genres and periods and to achieve an informed response through discussion, presentation and writing. You will study the big themes in life: love and death, light and shade, and everything important in between, reading some of the best books ever written and reflecting on some of the best stories ever told.

Studying English Literature at A-level is not something that happens merely in the classroom but is a set of skills and experiences of real and transferable use in the wider world. You will gain the control to express yourself clearly and confidently in an increasingly inarticulate culture, exploring the world anew through a fresh set of perspectives.

English Literature at A-level balances a strong grounding in the core of English literature with the chance to explore or specialise in modern literature, literature from around the world, aspects of English language and related intellectual traditions such as aesthetics, gender studies, history, linguistics, philosophy and psychology.

### Entry criteria

- At least a grade 6 in both GCSE English Language and GCSE English Literature is required.
- A willingness to read a wide variety of books, including books which make demands on their readers, is an absolute. We look for independent reading beyond the syllabus, and for independent, well-informed critical thinking.

Unit & title of module	Assessment	Percentage of mark
Paper 1: Love through the Ages 3 sections – Shakespeare, comparison of unseen poetry, and comparison of anthology poetry and prose text*	Written exam 3hrs	40% of final mark
Paper 2: Modern Times+ 2 sections – drama, and response to passage of unseen prose fiction and comparison of novel and poetry**	Written exam 2hrs 30min	40% of final mark
Coursework	Coursework comparing two texts of any genre and type (one must be pre- 1900) – 2,500 words	20% of final mark

\* We do Shakespeare's *Othello* and Hardy's *Tess of the d'Urbervilles* for the Shakespeare and prose text respectively

\*\* We do Williams's *A Streetcar Named Desire*, Frayn's *Spies* and Plath's *Ariel* for the drama, prose and poetry texts respectively

## Progression

English Literature can be combined with many other subjects and can lead to a wide range of options, both academically in terms of higher education and professionally in terms of careers. It enables you to develop important skills for the worlds of further study and work. In particular you will develop an informed and analytical personal response, and articulate this through discussion, in presentation and on paper.

Many A-level English Literature students draw directly on their subject and pursue further study in English or creative writing, but also in the arts, such as history, modern foreign languages or philosophy, or in information management, such as journalism, law, public relations and publishing.

**Example of directly careers:** writer, editorial, copywriting, journalism, researcher, public relations officer, content manager, lexicographer.



## French (AQA)

As at GCSE, you will be assessed on your skills in listening, reading, writing and speaking the foreign language. You will develop your ability to use the language independently and express your own ideas and opinions on the following:

1. Social issues and trends
2. Political and artistic culture
3. Grammar
4. Works: Literary texts and films

Students intending to take an A-level course in Modern Languages should note that there will be a considerable amount of listening, reading and topic research to be done outside class. Much of this research is best done via the internet. If possible, they should visit the country whose language they are learning during the course. It is also a good idea to subscribe to a foreign language blog, newspaper or magazine - the school has details of suitable ones. Again, many European newspapers are available online.

### Entry criteria

- A minimum of a Grade 6 in GCSE French is required to study this subject at A-level.

Unit & title of module	Assessment	Percentage of mark
Paper 1	Written exam 2hrs 30min	40% of final mark

Paper 2	Written exam 2hrs	30% of final mark
Paper 3	Oral Exam 21-23min (inc. 5min prep time)	30% of final mark

## Progression

Language A-levels can be combined with any other subject and can be a very useful addition to a science or engineering programme. Post-GCSE language skills are valued by employers and can give access to HE courses which include a period of study abroad.

**Example of related careers:** Translator, Broadcast journalist, Detective, Interpreter, Political risk analyst, International aid/development worker, Diplomatic service officer, Teacher



## Geography (AQA)

Geography helps you to make sense of the world around you. It is hands on, it is relevant and it is fun. Geography will help you get to grips with some of the big questions which affect our world and understand the social, economic and physical forces and processes which shape and change our world. There are so many ways of learning in Geography. It is very practical with opportunities to learn new skills such as computer based mapping (called GIS), map skills, interpreting images, fieldwork skills, presenting, role playing and debating techniques.

Students will acquire a comprehensive knowledge of both physical and human geography in addition to completing external fieldwork.

### Entry criteria

- GCSE Grade 6 or above in Geography is required to study this subject at A-level.

Unit & title of module	Assessment	Percentage of mark
Physical Geography	Written exam 2hrs 30min	40% of final mark
Human Geography	Written exam 2hrs 30min	40% of final mark
Geographical Investigation	3,000-4,000 word essay	20% of

With the introduction of compulsory fieldwork into the A-level course students must now spend **four** days out of school

conducting practical fieldwork on both human and physical topics. As a result, there will be a residential visit to the Field Studies Centre at Malham Tarn in North Yorkshire which will cost in the region of £250-£300 per student. Students will then choose an area of interest to research further and to concentrate on for their individual investigation.

## Progression

Geography is an excellent 'bridging' subject between the Arts and Sciences. It combines well with a range of other A-levels and, if studied post A-level, can lead to a wide range of careers. According to the UK's Higher Education Statistics Agency (Hesa), graduates are among the least likely to be unemployed. More than 90% are in work or further study within six months of graduating. They are seen as employable due to their combination of transferrable skills including problem solving and critical thinking.

**Example of related careers:** Town planner, Environmental consultant, Commercial/residential surveyor, tourism officer, nature conservation officer, cartographer.



## International AS & A Level: Global Perspectives & Research [GPR] (CAIE)

This course is a compulsory part of the curriculum for all Sixth-Form students. It is designed to provide pupils with the skills they require to make a success of their subsequent studies at university, develop the ability to undertake independent and self-directed learning and to think critically and creatively. The programme of study supports the development of well-informed, independent minded individuals.

Examples of Global issues that may be covered in the course include:

- Cultural heritage
- Ethical foreign policies
- Medical ethics
- Impact of technology
- Quality of life
- Social inequality
- Human rights
- Sport in an international context

Global Perspectives and Research is accepted by many universities as being either equivalent to or **better** than an A-level.

Some universities (e.g. Manchester, Bristol, Cambridge, Oxford and the London universities) have been heavily involved in the design and implementation of the qualification in schools. Universities see the Cambridge Research Report in particular as offering a way to build the necessary research and independent skills needed for undergraduate work.

Unit & title of module	Assessment	Percentage of mark
Y12- Unit 1	Written exam 1hr 30min	18% of final mark
Y12- Unit 2	Coursework essay- between 1,750- 2000 words	16% of final mark
Y12- Unit 3	10min presentation & 800 word reflection	16% of final mark
Y13- Cambridge Research Report	5000 word essay	50% of final mark

Many universities welcome students who have taken the Cambridge International A Level in Global Perspectives and Research (GPR). The qualification can form part of your offer condition when taken in combination with other A-levels.

Examples include:

- University of Birmingham, College of Medical and Dental Sciences will accept GPR as a 4th A Level, which means that the offer will be AAAB (compared to A\*AA for three subjects; both Biology and Chemistry must be offered at grade A)
- University of Edinburgh will accept Cambridge International A Level in Global Perspectives and Research (GPR) as a third subject

- University of Exeter will accept Cambridge International A Level in Global Perspectives and Research in lieu of an A-level or equivalent and consider grading to be equivalent to standard A 'Levels, i.e. an A grade in the Cambridge International A Level in Global Perspectives and Research will be deemed equivalent to A 'level grade A

Other students have found that the Cambridge Research Report helped them write a more focused, meaningful Personal Statement and/or that it gave them something substantial to discuss at their university interview.

## Progression

Cambridge Global Perspectives and Research prepares learners for further education and for life-long learning across a range of disciplines by helping them to be:

- Confident in working with information and ideas – their own and those of others;
- Responsible for themselves, responsive to and respectful of others;
- Innovative and equipped for new and future challenges;
- Engaged intellectually and socially, ready to make a difference.





## Government & Politics (AQA)

Students will gain a detailed insight into the rapidly changing world of British and American Politics today, including the roles played by key individuals and institutions. Students will also learn about political ideology. Ideologies studied include Conservatism, Liberalism, Socialism and Nationalism / Feminism.

### Entry criteria

- Entry into the Sixth Form and an interest in current affairs.

Unit & title of module	Assessment	Percentage of mark
Government & politics of the UK	Written exam 2hrs	33.3% of final mark
Government & Politics of the USA & comparative politics	Written exam 2hrs	33.3% of final mark
Political ideas	Written exam 2hrs	33.3% of final mark

### Progression

A good A-level grade in this subject is highly valued by all universities and can lead to a wide range of courses and careers, particularly in the law, local government, the civil service and education. The communication and analytical skills acquired are also much valued in advertising, journalism, and business management.

**Example of related careers:** Government social research officer, Political risk analyst, Public affairs consultant, Policy officer, Journalist, Charity officer, Stockbroker, Local government officer.



## History (AQA)

Students will undertake an in-depth study of British and European History from the nineteenth to the twenty first century, and acquire many important transferable skills.

### **Tsarist and Communist Russia, 1855-1964**

Autocracy, Reform and Revolution, 1855-1917

The Soviet Union, 1917-1964

### **The Making of Modern Britain, 1951-2007**

Building a new Britain, 1951-1979

Modern Britain, 1979-2007

### Entry criteria

- History GCSE Grade 6 or above

Unit & title of module	Assessment	Percentage of mark
Tsarist & Communist Russia, 1855-1964	Written paper exam, 2hrs 30min	40% of final mark
The making of modern Britain, 1951-2007	Written paper exam, 2hrs 30min	40% of final mark
Historical investigation	Extended essay of 3000-3500 words	20% of final mark

## Progression

A good A-level grade in History is highly valued by all universities, and can lead to a wide range of courses and careers, particularly in law, local government, the civil service, heritage, human resources, journalism and education.

History is an academic A-level which is very highly regarded amongst employers who want employees to have the skill set that history students have, including the ability to communicate fluently, coherently and in a logical manner. The analytical skills acquired, such as selecting and deploying information and then making an argument from it, are also much valued.

**Examples of related careers:** Archivist, Historic buildings inspector/conservation officer, Museum/gallery curator, Secondary school teacher, Archaeologist, Politician's assistant



## Mathematics & Further Mathematics (Pearson Edexcel)

The A-level Mathematics course provides a solid foundation in pure mathematics and introduces mechanics and statistics topics. This broad base complements many other A-level subjects but is particularly beneficial to students studying Physics and Social Sciences. Students who study the Further Mathematics option will complete two full A-levels in Mathematics at the end of Year 13. Mathematics students receive 8 hours of lesson time per fortnight and Further Mathematics students receive 14 hours per fortnight.

- **Pure Mathematics Topics:** Algebra, Differentiation, Trigonometry, Sequences and Series, Integration, Indices and Surds, Polynomials, Co-ordinate Geometry and Graphs.
- **Mechanics Topics:** Equations of Motion, Friction, Resolving Forces and Momentum.
- **Statistics Topics:** Measures of Spread, Correlation, Hypothesis Testing and Probability.

Please note that any student considering the Further Mathematics option MUST start Further Mathematics and change to an A-level Mathematics option if necessary, NOT the other way round.

Additional support through drop-ins outside of lesson time is offered to all Sixth-Form mathematicians in addition to half day workshops in the holidays.

### Entry criteria

- Mathematics students (9MA0) require a Grade 6 or higher at GCSE Maths and Physics.
- Further Maths students (9MA0 and 9FM0) a Grade 7 or higher at GCSE Maths and Physics.

Unit & title of module	Assessment	Percentage of mark
Mathematics (9MA0) <ul style="list-style-type: none"><li>• Pure 1</li><li>• Pure 2</li><li>• Statistics &amp; Mechanics</li></ul>	Written exam paper each 2hrs	Each paper is worth 33% of final mark
Further Mathematics (9FM0) <ul style="list-style-type: none"><li>• Core Pure 1</li><li>• Core Pure 2</li><li>• Further Mechanics</li><li>• Further Statistics</li></ul>	Written exam each 1hrs 30min	Each paper is worth 25% of the final mark

## Progression

Mathematics is one of the most sought after A-levels. It can be used in almost any career. Students with an A-level in Mathematics are recognised to have problem-solving skills, logical thought processes, numerical skills and an ability to think independently.

**Example of related careers:** Statistician, Astronomer, Data analyst, Investment analyst, Software engineer, Game designer, Meteorologist, Chartered accountant, Quantity surveyor



## Media Studies (OCR)

The mass media has been the dominant cultural form of the last 100 years; today it not only reflects our attitudes and values, it may also shape them. How and why they do that, and the consequences for all of us, are at the heart of Media Studies.

Students will learn both media *analysis* and media *production*. The course mostly comprises theoretical and critical debates and discussions. However, students will also learn video and print production techniques in order to produce their own production pieces. The course is suited to those who are keen to understand the world around them, to investigate how the media informs, persuades and entertains and who are keen to design and create their own media productions using modern media technologies.

Students studying English Language, Art subjects, Graphics, Drama, Music, Business, Psychology, Politics or Sociology will find familiar and transferable ideas in Media Studies.

Contrary to press reports, Media Studies is not an easy option, nor indeed does it restrict progression to even the most demanding universities/courses. Please speak with Mr Beach if you would like further guidance.

### Entry criteria

- Students must achieve a Grade 6 in English. Those who achieve a Grade 5 in Art, IT, Graphics and Music will also be considered.

Unit & title of module	Assessment	Percentage of mark
Media Messages	Exam	35%
Evolving Media	Exam	35%
Making Media	NEA	30%

## Progression

Any career that requires using the written word, constructing opinions and presenting information clearly to different audiences. Specialised work in television, film, radio, journalism, advertising, marketing, retailing, graphics and design.

**Example of related careers:** TV/film/video producer/director, Web content manager, Digital marketer, Media buyer and or planner, Journalist, Social media manager, UX designer, Writer.



## Music (AQA)

This course enables students to extend their knowledge and understanding of music, to create and develop their own musical ideas and to demonstrate technical, interpretative and communication skills through performing music.

This three-unit course helps students to develop aural, theoretical and analytical skills and enables them to explore a number of set works and two areas of study selected to suit their preferences. They can choose to study compositional techniques, to create music which draws on their own experience and enthusiasm or to arrange a given piece of music. In their performances, students can present solo and ensemble pieces and can work with music technology.

A-level Music builds on the knowledge and skills gained from GCSE Music as well as musical experience gained outside the classroom. It recognises the interdependence of different aspects of musical activity. This specification provides a sound preparation for the study of music in higher education, as well as providing opportunities to develop strengths and interests leading to music-related and other careers. It encourages students to develop a wide range of transferable skills such as critical thinking, research, communication and team-work.

### Entry criteria

- GCSE Music is preferred.
- ABRSM Grade 5-6 on an instrument also preferable.

Unit & title of module	Assessment	Percentage of mark
Appraising Music	Listening & written exam paper	40% of final mark
Performance	10 minutes of performance	35% of final mark
Composition 1 & 2	Min of 4hrs 30min of music in total	25% of final mark

## Progression

Music is a popular degree subject and a lot of graduates go into music teaching, often as freelance or travelling music teachers of particular instruments. Many music graduates get work as musicians as well, or work as sound recordists and in similar technical roles. Music is important in advertising and so a lot of graduates go into media or marketing roles and management is also a popular job role for music graduates.

**Example of related careers:** Music producer, Music therapist, Musician, Sound designer/engineer/technician, Special effects technician, Tutor, School teacher, Marketing executive, Talent agent.



## Photography (AQA)

The course gives each student the opportunity to explore photographic techniques as well as the traditional visual qualities of the medium such as composition, subject matter and colour. Learning how photographers control movement and depth of field, students start with the basic camera controls to quickly build a portfolio of work ready for the exhibition at the end of the course.

Photoshop skills now form a fundamental element of the course based around the school's Apple Mac suite and graphics tablets, as does the ability to create film and animation using iMovie software.

The school now also has a fully functional darkroom allowing for traditional wet processes, black-and-white as well as colour film printing.

Candidates will be required to purchase or have access to a digital SLR camera, flash and tripod. A USB memory stick will be needed. For presentation and storage purposes a portfolio case is also required.

### Entry criteria

- No previous experience is necessary; however, there is a strong emphasis on creative exploration of the medium and associated equipment.
- Students who have not completed a GCSE Art and Design related course may be asked to show a portfolio of recent work to show their commitment to the course.

Unit & title of module	Assessment	Percentage of mark
Personal Investigation	Coursework portfolio	50%

Personal Investigation Essay	Personal Investigation (written critical aspect)	10%
Externally set project	Controlled Assignment	40%

## Progression

Many students will opt for Photography because they wish to investigate the subject. Others may wish to combine a creative subject to give them a greater range of choices in light of future prospects. Britain is renowned for its creative individuals; careers, although difficult to access, can command high salaries. Any student taking the course will develop critical awareness, be self-motivated, independent, flexible and a creative thinker.

**Example of related careers:** Graphic designer, Advertising art director, Medical illustrator, Photographer, Press photographer, Art therapist, Visual merchandiser



## Physics (AQA)

The course at King Edward's aims to provide you with an introduction to Physics and its uses, and to prepare you for possible further study offering:

- A broad vision of Physics as it is today
- A simple introduction to the essence of quantum mechanical thinking

Training in the essential skills of experimentation

### Entry criteria

- GCSE Grade 6 or above in Physics is required to study this subject at A-level.
- A Grade 6 or above in Mathematics is also required to cope with the mathematical content of the course.
- For candidates studying Combined Science at GCSE, a Grade 6 and above in the Physics component is required.

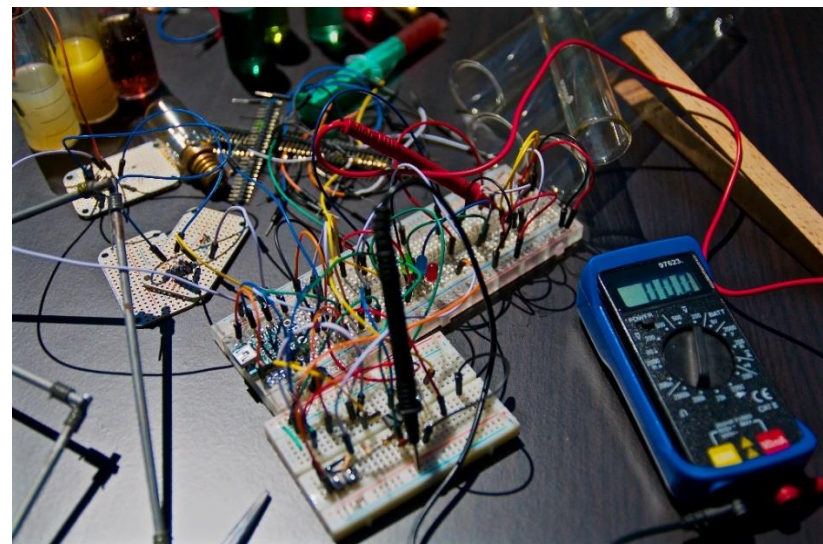
Unit & title of module	Assessment	Percentage of mark
1. Measurements & their errors 2. Particles & radiation 3. Waves 4. Mechanics & materials 5. Electricity 6.1 Further mechanics	Written exam 2hrs	34% of final mark

6.2 Thermal physics 7. Fields & their consequences 8. Nuclear physics	Written exam 2hrs	34% of final mark
Practical skills & data analysis 12 Turning points in physics	Written exam 2hrs	32% of final mark

## Progression

This modern, up-to-date course forms a solid foundation for continuation to Higher Education studying Physics, Engineering, Medicine, Medical Physics, Geology, Law, Accountancy and many other degrees. 20% of Physics graduates are employed by the financial sector. The other main employers are telecoms, research, government, IT, space, and oil and gas exploration.

**Example of related careers:** Astronomer, Meteorologist, Acoustic consultant, Clinical scientist (medical physics), Radiation protection practitioner, Metallurgist



## Psychology (AQA)

Psychology allows you to study some of the most intriguing human behaviour, from a range of perspectives and answer questions like:

- Are people born good or evil?
- Can the way parents treat their child in the first 2 years really instill stalking behaviour?
- To what extent do our genes influence psychiatric conditions?
- Are conditions such as obsessive compulsive disorder innate or learned?
- How do disorders like anorexia nervosa and schizophrenia develop?

Through the study of psychological theories, concepts and research, you will develop a good understanding of the principles and perspectives governing such behaviour and investigate classic research in Psychology - which ranges from: conditioning an 11 month old baby with a phobia of all things white and fluffy, getting good law abiding citizens to deliver lethal electric shocks to innocent others, and locking innocent people in a prison to see if pretend guards become corrupted by power.

### Entry criteria

- GCSE grade 6 in any two of the following subjects and grade 5 in the third: English, Mathematics and Biology/Combined Science.

Unit & title of module	Assessment	Percentage of mark
Introductory topics in Psychology	Written exam- 2hrs	33.3% of final mark
Psychology in Context	Written exam- 2hrs	33.3% of final mark
Issues & Options in Psychology	Written exam- 2hrs	33.3% of final mark

## Progression

This is an acceptable qualification for a wide range of courses at university. With further study at postgraduate level, it can lead to careers in Clinical Psychology, Educational Psychology and Occupational Psychology.

**Example of related careers:** Clinical psychologist, Counselling psychologist, Forensic psychologist, Education mental health practitioner, High intensity therapist, Mediator, Play therapist, Psychological wellbeing practitioner



## Religion, Philosophy & Ethics (AQA)

Students will study key areas which cover a broad selection of topics concerned with philosophy, religion and ethics. Students are encouraged to develop their own opinions and beliefs using critical thinking, evaluative and analytical skills. Each topic gives a balance of both ancient philosophies and ethical systems, that can be applied to the most contemporary issues. We develop key skills such as problem solving, patience, communication, attention to detail and interpersonal skills.

These topics include but are not limited to: animal testing, animal rights, medical ethics, and sexual ethics. Ethical language and thought; Debates surrounding the significant idea of conscience. Students will study philosophical thought and the issues raised by belief which include: ancient philosophical influences; the nature of the soul, mind and body; the existence or non-existence of God; the nature and impact of religious experience; and the problem of evil.

Finally, students will cover one religion systematically which will most likely be Christianity. This focuses on religious beliefs, values and teachings, their interconnections and how they vary historically and in the contemporary world. Sources of religious wisdom and authority, the practices which shape and express religious identity, and how these vary within a tradition. Key themes related to the relationship between religion and society.

### Entry criteria

- Students should have achieved a minimum of a Grade 5 in either GCSE English or a humanities subject.

Unit & title of module	Assessment	Percentage of mark
Philosophy of religion & ethics	Written exam 3hrs	50% of final mark
Study of religion & dialogues	Written exam 3hrs	50% of final mark

## Progression

This is a qualification suitable for a wide range of courses at university. Being a contemporary and ever-evolving subject, you could further your expertise in fields such as travel and tourism, health and social care, childcare and education, public services and legal studies.

**Example of related careers:** Local government officer, Paralegal, Aid worker, Lecture/Teacher, Barrister, Legal executive, Psychotherapist, Human resource officer



## Sociology (OCR)

Sociology A-level gives students an insight into the study and analysis of society and the way in which people interact with each other through different groupings and in different settings. The course looks at contemporary topics like crime and deviance; families; health; work and poverty and the class system, through a variety of sociological lenses, such as; Functionalism; Feminism; Marxism; Post-modernism.

In each area, Sociology takes an analytical look at our assumptions about these different groups or areas of society and explores the different interpretations about each of them e.g. Why do some families have different values compared to others? Why do people commit crime? In addition, the course also prepares students well for university and college courses with its module on research methods and the focus on preparing students to develop a critical and analytical approach to research.

### Entry criteria

- Students should have met the minimum entry requirements for the Sixth Form and achieved a minimum of a Grade 5 in either GCSE English or a Humanities subject.

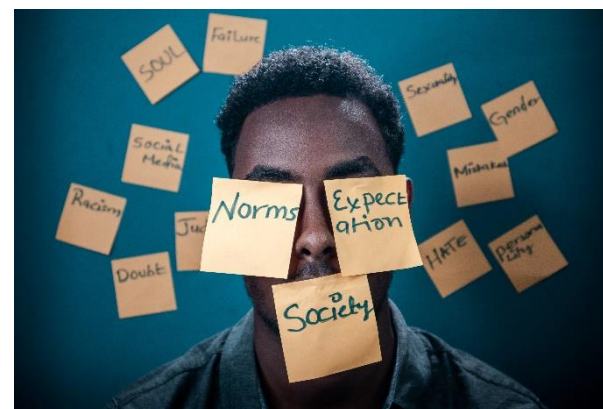
Unit & title of module	Assessment	Percentage of mark
Part A - Socialisation, Culture and Identity. Part B – Youth Subcultures	Written exam 1hr 30min	30% of final mark

Researching and Understanding Social Inequalities	Written exam 2hrs 15min	35% of final mark
Part A - Globalisation and the Digital Social World. Part B – Crime and Deviance	Written exam 2hrs 15min	35% of final mark

## Progression

This is a qualification suitable for a wide range of courses at university. Being a contemporary and ever evolving subject, you could further your expertise in fields such as Anthropology, Criminology, Archaeology, Economics, Geography, History, Law, Linguistics, Politics, Psychology. With further study at postgraduate level, it can lead to careers in local government, research, civil service posts and work within social service sector and with various think tanks and policy research groups.

**Example of related careers:** Community development worker, Housing manager/officer/ Police officer, Youth worker, Social researcher, Advice worker, Tutor/Lecturer, Life coach, Probation officer



## Spanish (AQA)

As at GCSE, you will be assessed on your skills in listening, reading, writing and speaking the foreign language. You will develop your ability to use the language independently and express your own ideas and opinions on the following:

1. Social issues and trends
2. Political and artistic culture
3. Grammar
4. Works: Literary texts and films

Students intending to take an A-level course in Modern Languages should note that there will be a considerable amount of listening, reading and topic research to be done outside class. Much of this research is best done via the internet.

If at all possible, they should visit the country whose language they are learning during the course. It is also a good idea to subscribe to a foreign language blog, newspaper or magazine - the school has details of suitable ones. Again, many European newspapers are available on-line.

### Entry criteria

- A minimum of a Grade 6 in GCSE Spanish is required to study this subject at A-level.

Unit & title of module	Assessment	Percentage of mark
Paper 1	Written exam 2hrs 30min	40% of final mark
Paper 2	Written exam 2hrs	30% of final mark
Paper 3	Oral exam 21-23 min (inc. 5min prep time)	30% of final mark

## Progression

Language A-levels can be combined with any other subject and can be a very useful addition to a science or engineering programme. Post GCSE language skills are valued by employers and can give access to HE courses which include a period of study abroad.

**Example of related careers:** Translator, Broadcast journalist, Detective, Interpreter, Political risk analyst, International aid/development worker, Diplomatic service officer, Teacher.



## Sport & Physical Education (AQA)

This course aims to develop students' knowledge and understanding of how different factors combine in varying ways to influence the quality of performance in a variety of physical activities. A student's performance will also be improved through practice, analysis and evaluation.

The course allows students to 'play to their strengths' and develop dynamic theoretical and practical skills. There are close links to Biology, Psychology and Physics through the range of topics covered during the course.

- **Unit 1-** Applied Anatomy and Exercise Physiology.
- **Unit 2-** Biomechanical Movement
- **Unit 3-** Skill Acquisition
- **Unit 4-** Sport Psychology
- **Unit 5-** Sport and Society
- **Unit 6-** The role of Technology in Physical Activity and Sport
- **Unit 7-** Practical development of chosen activity with detailed self/performer analysis

### Entry criteria

- GCSE Grade 6 or above in the sciences and a Level 6 or above English and Mathematics.

Unit & title of module	Assessment	Percentage of mark
Paper 1	Written exam 2hrs	35% of final mark
Paper 2	Written exam 2hrs	35% of final mark

Coursework/Practical

Practical performance & written analysis

30% of final mark

## Progression

If you play sport, you will learn how to improve your level of performance. You may want a career which will make use of the knowledge gained in the variety of topics covered, e.g. professional or semi-professional sportsperson, coach, fitness instructor, sports statistical analysis, physiotherapist, sports psychologist, sportswear/equipment design, paramedic, leisure management, media development and marketing at professional clubs and teaching. This course is also useful for careers in the Police, the Army, Navy and RAF.

**Example of related careers:** Personal trainer, Exercise physiologist, Teacher, Sports coach, Sport development officer, Sports therapist, Nutritionist, Outdoor activities manager, Primary or Secondary teacher, Sports and exercise psychologist



## King Edward's Sports Performance Centre – New for Spring 2022

Our new **Sports Performance Centre** has been designed to cater for students at King Edward's but it also heralds the start of an exciting new Trust - **The London Road Sports Partnership**.

The new **Sports Performance Centre** will provide students at King Edward's with access to a state-of-the-art building: five-badminton-court sports hall, specialist training facilities, a fitness suite, and an aerobics room & dance studio with access out from these rooms onto a large balcony overlooking St James' Church, the Lodge and Louth's historic vista.

The new Trust - **The London Road Sports Partnership** - formed the central component of the King Edward's bid. The Trust aims to build a strong, strategic, sports partnership between King Edward's, its students and Louth Old Boys Football Club, Louth Cricket Club, Louth Hockey Club, Louth Athletics Club and Louth Golf Club.

**The Trust** aims to create a unique opportunity for our students to work with and feed into the Louth clubs, and to provide a much-needed winter indoor home and training venue for these clubs - especially their youth teams - and also to provide a strategic plan for **Performance Sport**. The Trust aims to achieve this latter goal by developing links with professional clubs, coaches and centres of excellence in the **East Midlands** region as well as working with Lincoln and Loughborough Universities' Sports Science departments.





**If you have any questions about our Sixth Form then please contact us on:**

**Tel: 01507 600456**

**Email: [sixthformadmin@kevigs.lincs.sch.uk](mailto:sixthformadmin@kevigs.lincs.sch.uk)**

**King Edward VI Grammar School, Edward Street, Louth, Lincs, LN11 9LL**